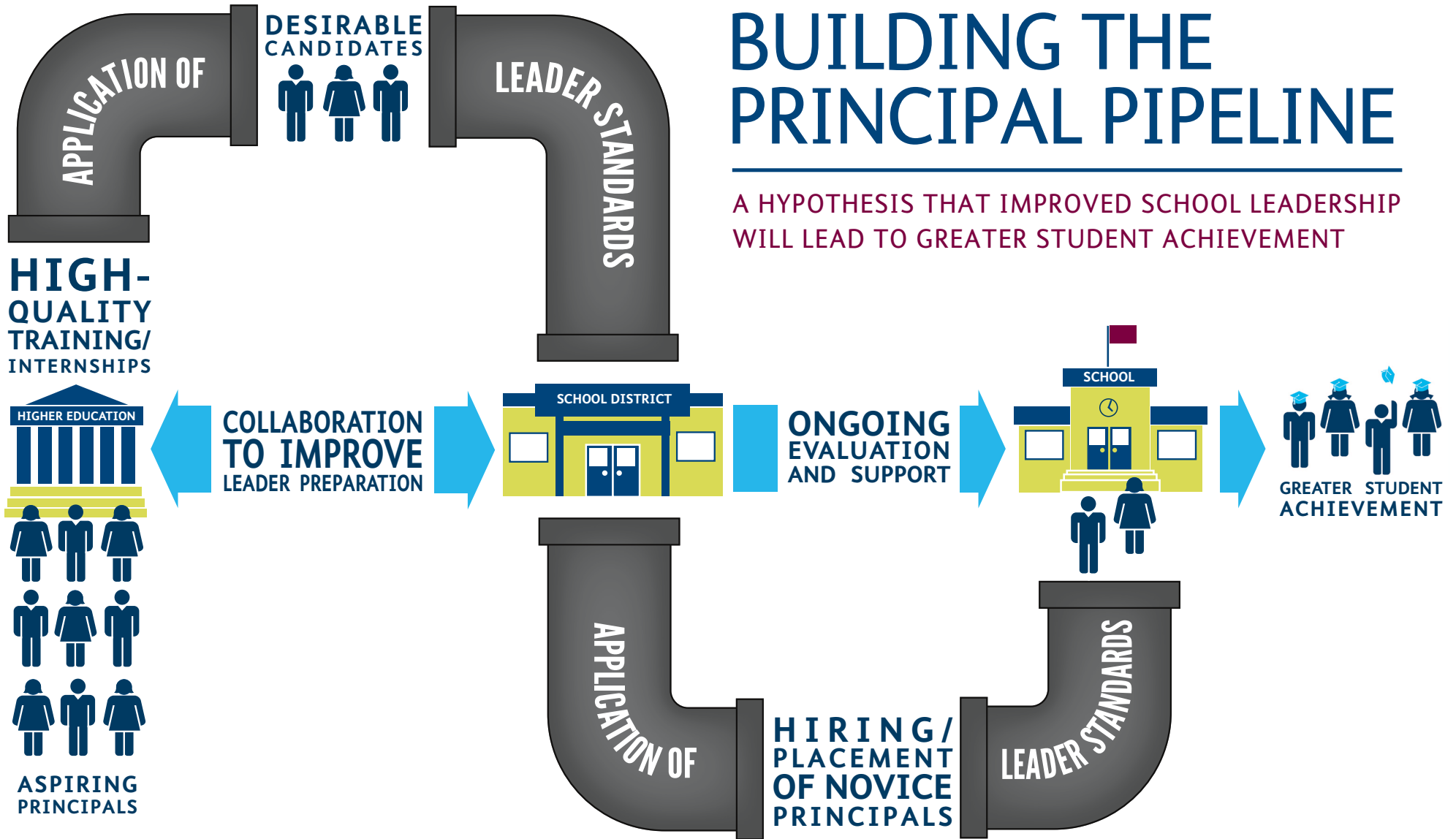


BUILDING THE PRINCIPAL PIPELINE

A HYPOTHESIS THAT IMPROVED SCHOOL LEADERSHIP WILL LEAD TO GREATER STUDENT ACHIEVEMENT



In 2011, The Wallace Foundation launched an effort to test whether six urban districts could put in place the key parts of a strong principal pipeline to produce a large corps of effective school leaders. By 2016, it was clear that they could. A study to be published in 2018 will assess the pipelines' impact on schools and students.